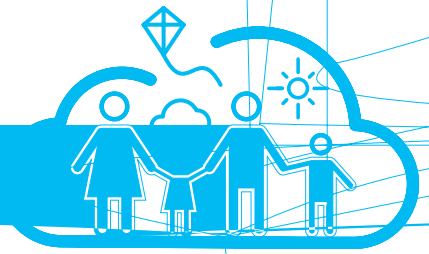


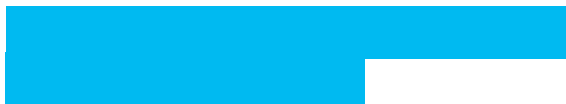
Air Quality.



athes

Is air quality worse walking and cycling than in a car?

Studies have shown that people in cars experience higher levels of pollution than those on foot or bicycle because they are in



☞ – z q Oz 'z² öü² – z² äö oz ú 'æy' Áüqî gzqÉ
A strong wind and no buildings can disperse air
Åü@ad² É² 'Ogæ Ýna@] i @qÉ " Ý'Ö² q² Öüüö
Ýäz zæ 'O%gæÖÜÜö 'Lz qî gÉ" 'æz qÖÄz ÜÜ² 'ü%
ÖÜÄü@ad² É&ü z öz üüÜÄü@ad² 'z öz ÖÜz
lower the further away you are from the source
ü%æz 'ÖÜÄü@ad² É



¹ https://www.researchgate.net/publication/310466891_Air_quality_inside_motor_vehicles'_cabins_A_review

² DEFRA

³ <https://www.ncbi.nlm.nih.gov/books/NBK361807/>

How does the weather affect air pollution?

Generally air pollution is worse during
Áz ÚñqY'ñ%æ' œœ ñYÁœ Úñ ÁÚ Yí Ú Æ È
Yæ] æ'gñ² qæñ² YÈ>ñ Yí ²² ø'qœY'ö æægœ Ú
Y' æY'œ q'œ'ö œ qY'Ú ò ñÚznOY'gñ- ÁÚ q'æñ
gñi qø'œ q'ö œ qø'qœY'ö æœÚœ È'ægœ' Oœñ] z'
] Oq'qí Úœ " œñ² " Áz ÚñqY'ñ%gñœ' ò zœœ Úœ
>i ² œ æægœ' Oœñ' gÚ œœ " Úñi ² q'œ'öz œñÚñ² z È
Air pollution levels are generally higher during
æz Yí - - z Úœ q'qí Úœ " œz œœ œz YÈ

What are the legal limits for air pollution in the UK?

œœY'qz Áz² qY'ñ² ò œœœÁñœ' æœ æœñi 'Ú ð
measuring and whether you are considering
- zOYi Ú - z² æ'œz Úœ' z q'ñœz Úœ' œñi Úñqœ'ñÚ
œz Úœ' Yearly averages of NO₂ at some sites in
/ Ú- œ " œ- 'Ú ðœ" Oœ

What are the safe limits for air quality in the UK?

œœ Y'œ%œ- œœ' q'œ%Ú² æñ' æz 'œ" Oœœ œÈ
œœ Ú ð ð² ñ Y'œ%œ- œœ' zYÁz gœœ' æz' gOYz' ñ%œ

